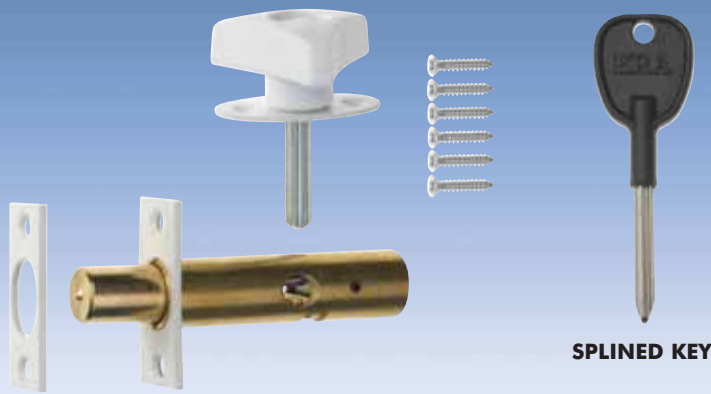
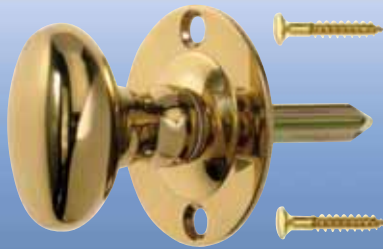


DOOR ACCESSORIES

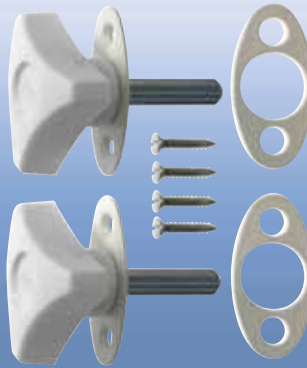


DOOR SECURITY BOLT AND EASI-TURN

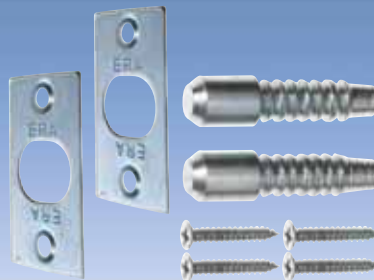
SPLINED KEY



THUMBTURN



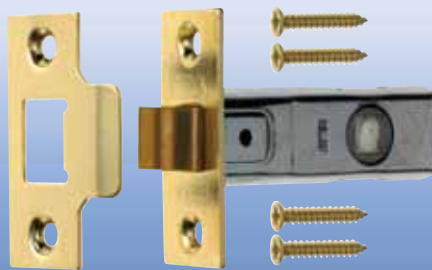
EASI-TURN



HINGE BOLTS



ROLLER LATCH



TUBULAR LATCH

The **ERA Door Security Bolt** offers concealed security for all internal and external doors. The separate splined key locks and unlocks from one side only.

The **ERA Thumbturn** is permanently fixed to the door in conjunction with a door security bolt. It is easily located in the event of an emergency and allows privacy when used on internal doors. It is also suitable as a security measure for cupboards and internal doors. It is available individually as a replacement for a key where a security bolt is already fitted.

The **ERA Easi-Turn and Door Security Bolt** is permanently fixed to the door, but because of its large triangular shape allows easy gripping and is especially suitable for the elderly, the visually impaired and the less able. It is available as a complete kit with Easi-Turn and Security Bolt or as a replacement for the key or thumbturn where a security bolt is already fitted.

The **ERA Hinge Bolt** offers added security on external doors with exposed hinges, helping to prevent doors being forced off their hinges. This bolt is suitable for all wooden internal and external doors. Manufactured from hardened steel it resists hacksawing. Hinge bolts are essential for all outward opening doors.

The **ERA Tubular Latch/Roller Latch** are suitable for all internal doors.

ORDERING DETAILS

Security Bolt and Splined Key

White	838-12
Brass	838-32
Satin	838-52
Saver Pack - 2 brass bolts plus 1 free key	838-33
Splined Key	506-52

Thumbturn

Brass	843-32
Satin	843-52
Polished Chrome	843-62

Easi-Turn Kit

White	841-12
Brown	841-22

Easi-Turn Replacement

White	842-12
Brown	842-22

Hinge Bolts

Satin	740-52
-------	---------------

Roller Latch

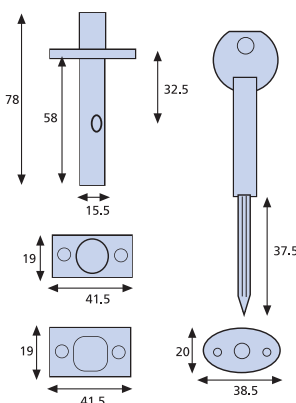
Roller latch 64mm (2.1/2") Brass.bulk	187-36
Roller latch 64mm (2.1/2") Satin.bulk	187-56

Tubular Latch

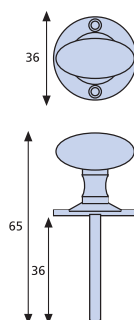
Brass 64mm (2 1/2")	188-32
Satin 64mm (2 1/2")	188-92
Brass 76mm (3")	189-32
Satin 76mm (3")	189-92

Rounded forends and keeps available please contact ERA sales for more information

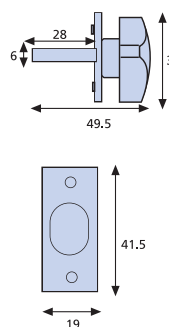
Door Security Bolt & Key



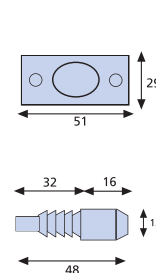
Thumb Turn



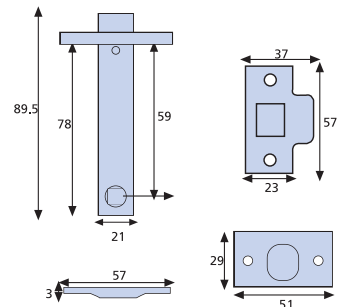
Easi-Turn



Hinge Bolt



Tubular Latch



All dimensions in mm.

DOOR ACCESSORIES

The **ERA Securichain** gives extra security for external doors and is fitted concealed in the door frame. Push button operation facilitates quick and easy locking and is especially suitable for the elderly. When in the locked position, conversation can take place through the door whilst being secured. The Securichain can only be unlocked when the door is closed.

The **ERA Viewer** allows visual identification of callers without the need to open doors. Made of precision optical glass, 160° and 180° angles of view are available. Viewers with plastic lenses are also available, with up to 200° angle of view. The viewer is adjustable to fit doors 35mm to 54mm thick.

The **ERA Door Chains** offer visible security, allowing conversation without giving access to visitors.

The **ERA Door Restrictor** is designed to limit door opening prior to allowing entrance to visitors. It is easily applied and released when the door is closed.

ORDERING DETAILS

Securichain

Brassed	700-32
Satin Chrome	700-52

Door Viewer

160° Brass - Glass Lens	786-32
160° Chrome - Glass Lens	786-62
180° Brass - Glass Lens	784-32
180° Chrome - Glass Lens	784-62
160° Brass - Plastic Lens	190-32
160° Chrome - Plastic Lens	190-62
180° Brass - Plastic Lens Wide Angle	191-32
180° Chrome - Plastic Lens Wide Angle	191-62
200° Brass - Plastic Lens Wide Angle	192-32
200° Chrome - Plastic Lens Wide Angle	192-62

Slide Chain

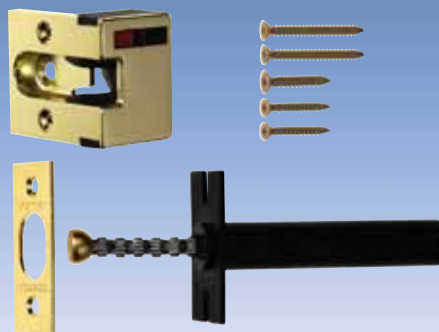
Brassed	787-32
Satin	787-52

Door Chain

Brassed	788-32
Satin	788-52
Chrome	788-62

Door Restrictor

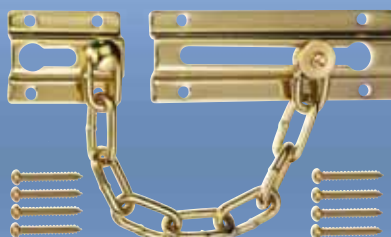
Brassed	789-32
Satin	789-52



SECURICHAIN



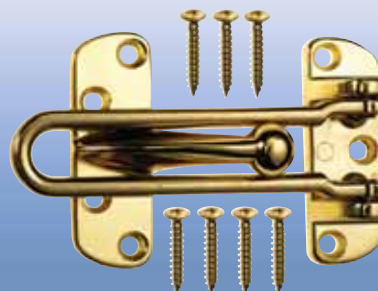
DOOR VIEWER



SLIDE DOOR CHAIN



DOOR CHAIN



DOOR RESTRICTOR

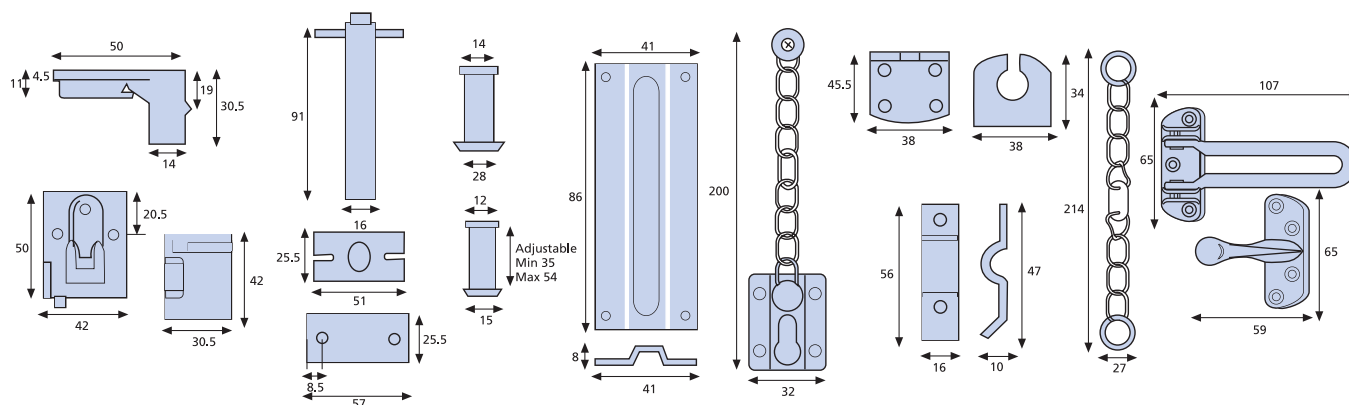
Securichain

Door Viewer

Slide Chain

Door Chain

Door Restrictor

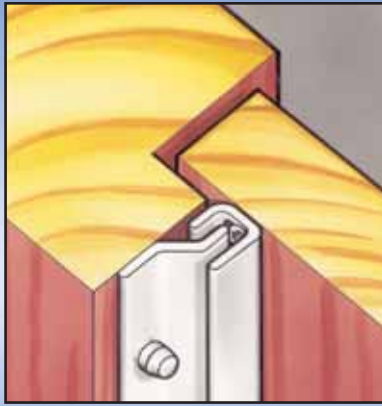


All dimensions in mm.

ANTI JEMMY STRIP



TYPE ONE



TYPE TWO



CROSS SECTION OF SECURISTRIP



TYPE THREE



The **ERA SecuStrip** is a low cost, effective way to protect your home or office. Featuring three models for inward and outward opening doors and windows, the ERA SecuStrip combines two interlocking steel profiles fitted to the outside of either a door and door frame, or a window and window frame. When closed, the two ingeniously designed profiles interlock to form a solid barrier against crowbar attack.

ERA SecuStrip is ideal for front, back and rebated double doors, including fire doors and windows. The security strip has the added advantage of hiding any previous damage to door frames, as well as acting as a draught excluder.

Available in a choice of finishes, including epoxy-coated white, brown and clear galvanised, standard strip lengths of 1965mm and 1980mm are cut to suit the door or window frame.

ORDERING DETAILS

Type One - Inward Opening

White 1965mm (6' 5 1/2")	107-11
Brown 1965mm (6' 5 1/2")	107-21
Galvanised 1965mm (6' 5 1/2")	107-91

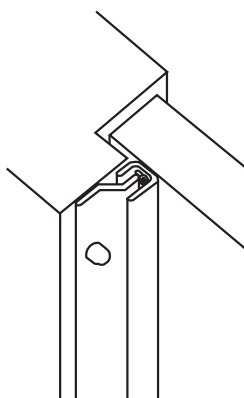
Type Two Twin Plus - Inward Opening

White 1965mm (6' 5 1/2")	108-11
Brown 1965mm (6' 5 1/2")	108-21
Galvanised 1965mm (6' 5 1/2")	108-91

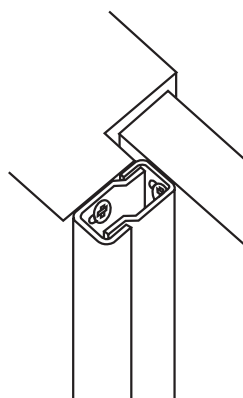
Type Three - Outward Opening

White 1980mm (6' 6")	109-11
Brown 1980mm (6' 6")	109-21
Galvanised 1980mm (6' 6")	109-91

Type One



Type Two



Type Three

