



# WISA®-Form Beto

**WISA-Form Beto is a coated special plywood for use in loose panel concrete formwork.**

## Base board

Mirror construction plywood made from birch and spruce veneers bonded together in a cross banded construction.

## Bonding

Phenolic resin cross-banded weather resistant glueing according to EN 314-2/class 3.

## Surface and edges

Face and reverse: Dark brown phenolic film 120 g/m<sup>2</sup>.

Imprinted text "WISA-Form Beto".

Edge sealing: Two coats of water resistant paint.

## Thicknesses and weight

Nominal thickness	Number of plies	Min. thickness (mm)	Max. thickness (mm)	Weight kg/m <sup>2</sup> (MC 10 %)
18	9	17.1	18.1	10.4
21	11	20.0	20.9	12.2

## Panel size

1220/1250 x 2440/2500 mm

Size tolerance (length/width) +/- 1 mm per metre

Squareness tolerance +/- 1 mm per metre length of diagonal

## Reuses

Typical number of reuses is likely to be in the range of 10-15 times. However the number of reuses will depend on a wide range of factors including good site practice, the required concrete finish, careful handling & storage of forms and the type and quality of release agent.



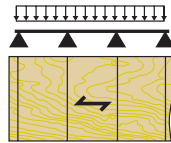


# Design data

Mechanical properties of WISA-Form Beto, in standard thicknesses, moisture content 10 +/-2%

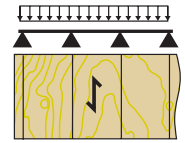
Nominal thickness (mm)	Mean modulus of elasticity bending (N/mm <sup>2</sup> )		Characteristic strength bending (N/mm <sup>2</sup> )	
	E <sub>mll</sub>	E <sub>ml-</sub>	f <sub>mll</sub>	f <sub>ml-</sub>
18	7864	7158	31.5	25.3
21	7621	7338	30.5	25.3

Face grain parallel to the span

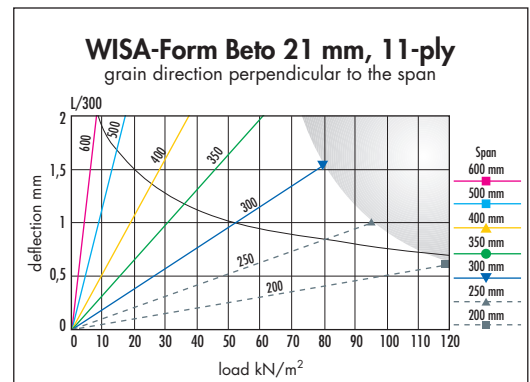
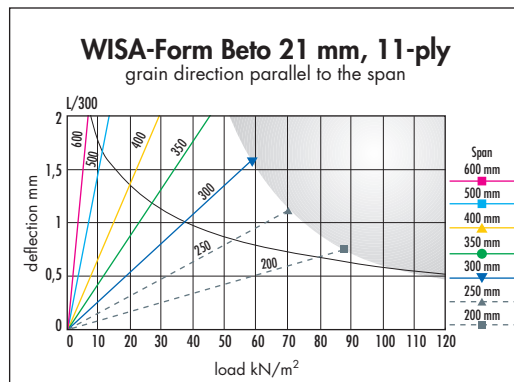
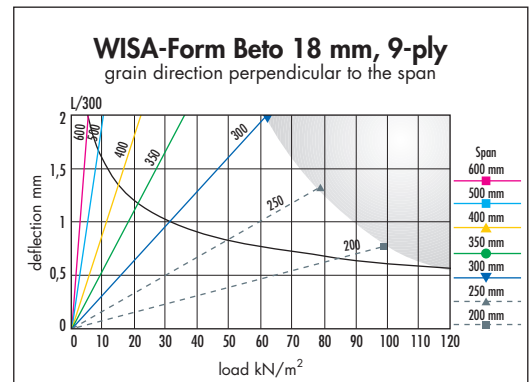
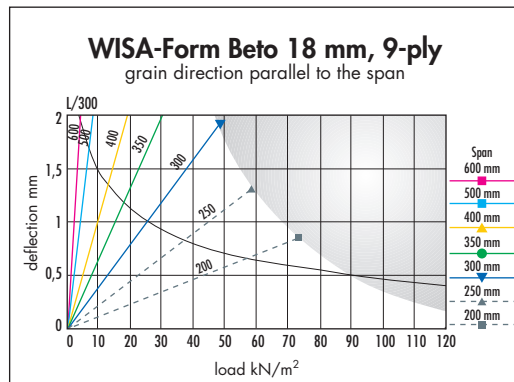


← grain direction of surface veneers

Face grain perpendicular to the span



← grain direction of surface veneers

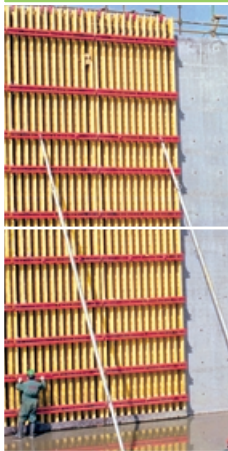


Moisture content 27 %, short time loading  
 Partial safety factor for the material is 1.3. Partial safety factor for the loads is 1.2.  
 Deflection limit L/300 of the span  
 Support width is not taken into account in calculations

## Instructions for use

See "Site guidance note for phenol surface film (PSF) and medium density overlay (MDO) plywood" available from UPM.

UPM policy is one of continuous development. We reserve the right to amend specifications without notice or obligation.



Niemenkatu 16  
 P.O. Box 203  
 FIN-15141 LAHTI

Tel. +358 204 15113  
 Fax +358 204 156347

www.wisa.com